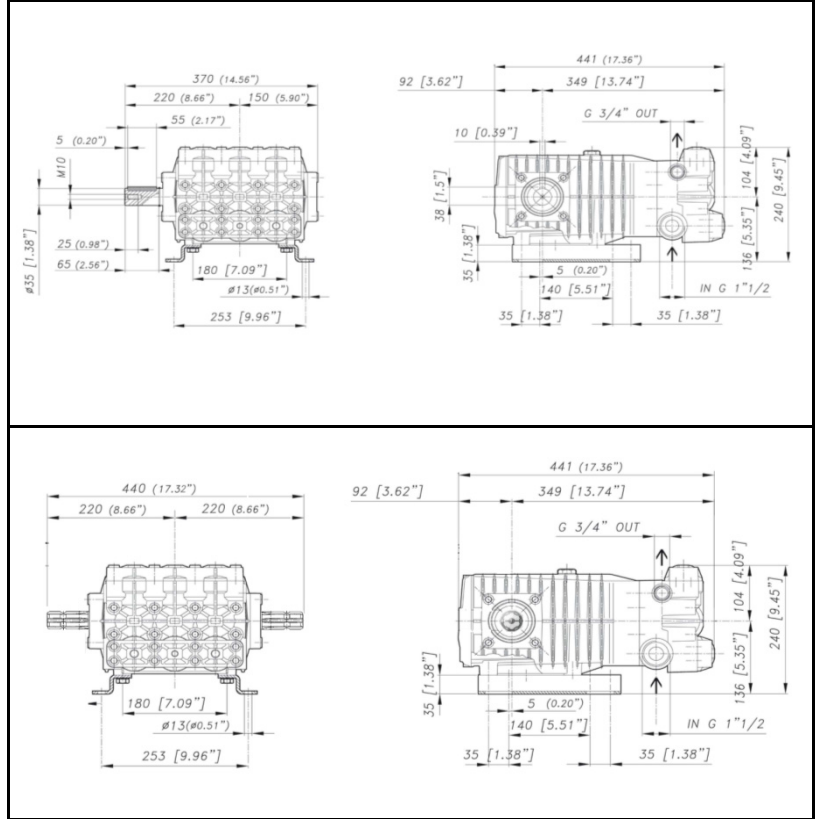
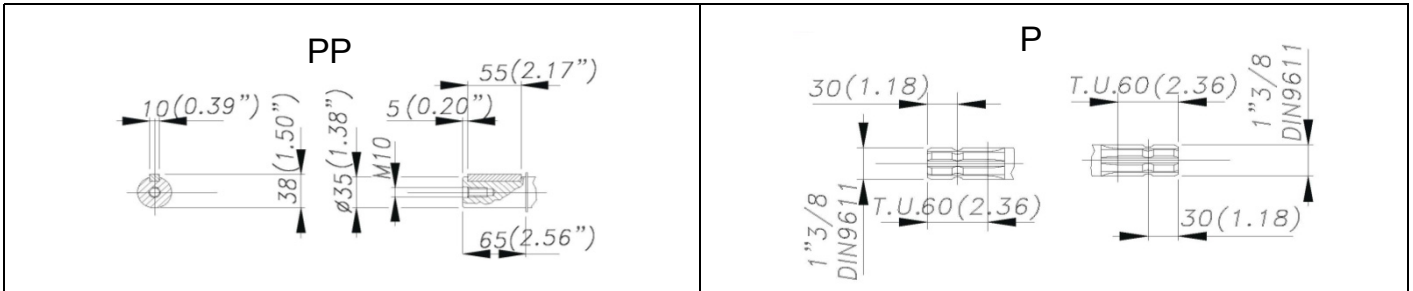


DIMENSIONI D'INGOMBRO - OVERALL DIMENSIONS



ALBERO POMPA - PUMP SHAFT



COPPIA DI SERRAGGIO - TORQUE CHART

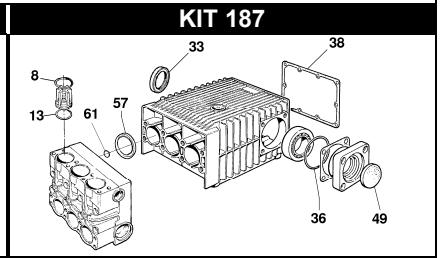
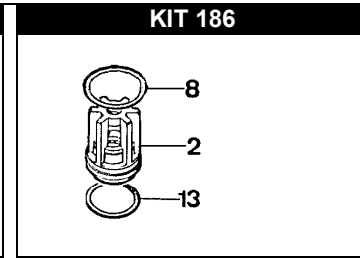
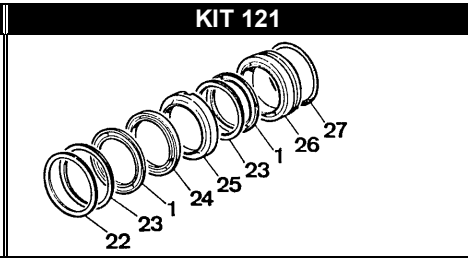
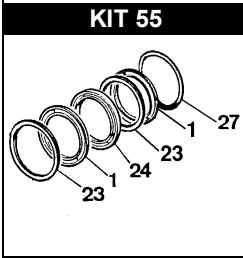
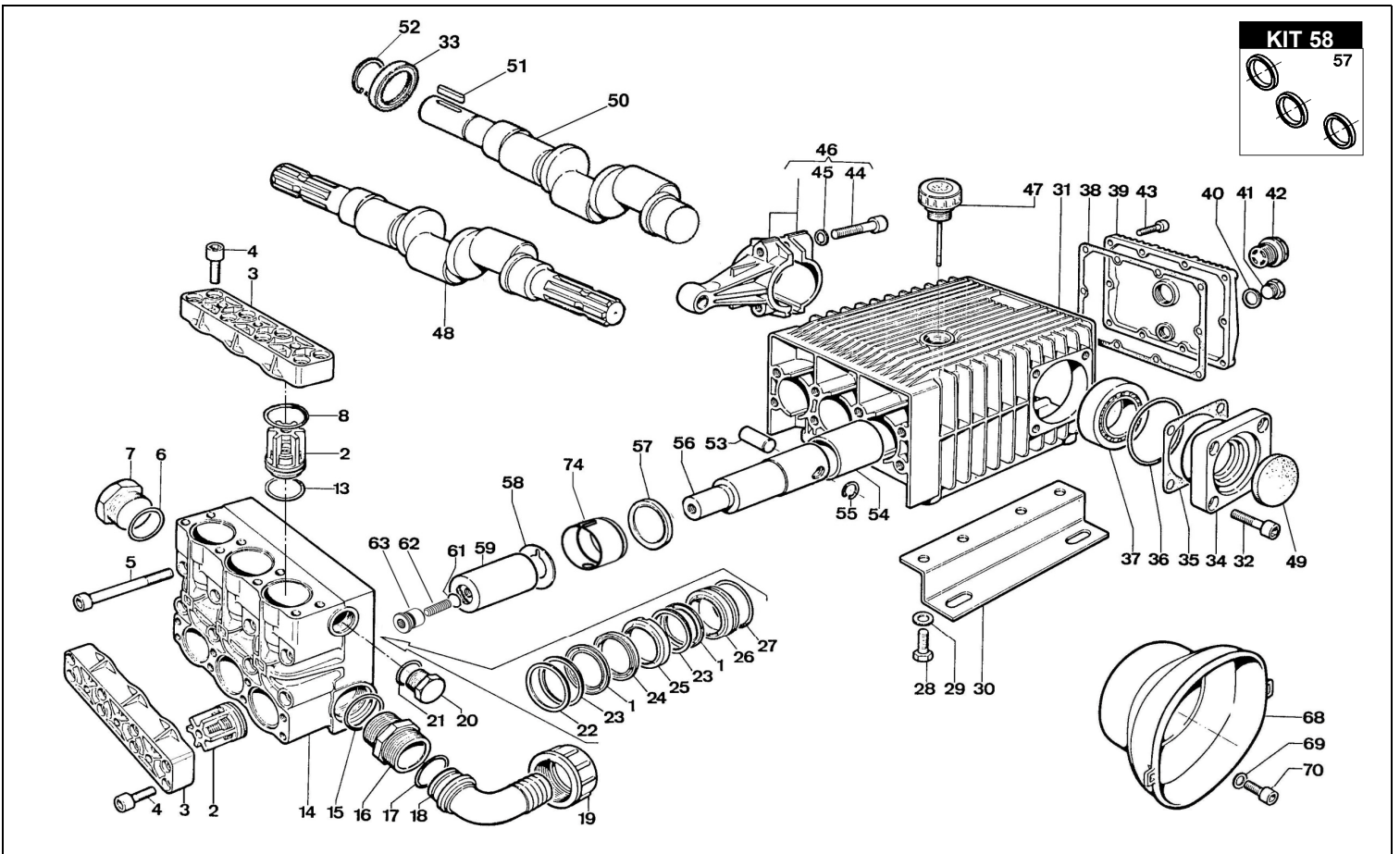
CODICE - CODE	Q.TY	POS	N-m	Lbr.ft
86.3910.00.2	16	4	68	50,2
86.4120.00.2	8	5	68	50,2
86.3703.00.2	4	28	68	50,2
86.3696.00.2	8	32	40	29,6
86.2216.00.2	10	43	10	7,4
86.3439.00.2	6	44	40	29,5
86.3900.00.2	3	62	40 (LOXAL 54-03)	29,6 (LOXAL 54-03)
73.0342.51.2	3	63	40 (LOXAL 54-03)	29,6 (LOXAL 54-03)

Tolleranza di serraggio: 0/-10%  
Tolerance on torque value:

INFORMAZIONI UTILI  
USEFUL INFORMATION

LUBRIFICANTE-LUBRICANT:  
OLIO MOTORE O SEMIIDRAULICO SAE 30  
MOTOR OIL OR SEMI-HYDRAULIC OIL SAE 30





POS.	CODICE PART NO. RÉF.	DENOMINAZIONE - DESCRIPTION - DESCRIPTION	Q.TY	POS.	CODICE PART NO. RÉF.	DENOMINAZIONE - DESCRIPTION - DESCRIPTION	Q.TY
1	802201002	"V" PACKING DIA. D.45	6	40	824107002	GASKET D.16,5x23x1	1
2	739824973	VALVES ASSY	6	41	852579002	CAP G.3/8	1
3	730416092	VALVES COVER	2	42	853515502	OIL SIGHT GLASS WITH O-RING	1
4	863910002	BOLT TCEI M12x40 UNI5931	16	43	862216002	BOLT TCEI M6x25 UNI5931	10
5	864120002	BOLT TCEI M12x110 UNI5931	8	44	863439002	BOLT TCEI M10x45 UNI5931	6
6	803209602	O-RING 2,62x47,3	1	45	843870002	SCHNORR WASHER D.10,5	6
7	852752002	CAP G.1"1/2	1	46	739802973	CONROD	3
8	803270002	O-RING 3,53x49,2	6	47	853516002	OIL PLUG + DIP STICK	1
13	803253002	O-RING 3,53x34,52	6	48/1	730030262	CRANKSHAFT CK 73 P	1
14	730415092	PUMP HEAD	1	48/2	730032262	CRANKSHAFT CK 110 P	1
15	803209602	O-RING 2,62x47,3	1	48/3	730408262	CRANKSHAFT CK 120 P	1
16	835092502	NIPPLE G.1"1/2-G.1"3/4	1	49	802099602	CAP D.52x7	1
17	803208502	O-RING 2,62x37,77	1	50/1	730409262	CRANKSHAFT CK 120 PP	1
18	840595002	90° ELBOW CONNECTOR DIA.40 -1,57"	1	50/2	760029262	CRANKSHAFT CK 110 PP	1
19	820095002	WING NUT G.1"3/4	1	50/3	730319262	CRANKSHAFT CK 90 PP	1
20	852693532	CAP G.3/4	1	50/4	730037262	CRANKSHAFT CK 73 PP-CK115 PP	1
21	803218002	O-RING 3,0x22	1	51	806585002	TAB 10x8x55	1
22	730039532	SPACER	3	52	801264002	SNAP RING D.35	1
23	730044322	THRUST RING	6	53	852007402	PISTON PIN DIA.18x35	3
24	730040322	ANTIEXTRUSION RING	3	54	804468002	BUSHING	3
25	730058532	FRONT GLAND	3	55	800040002	SNAP RING D.18	6
26	730070532	REAR GLAND	3	56	730407092	PLUNGER ROD	3
27	803283002	O-RING 3,53x58,74	3	57	802180002	OIL SEAL	3
28	863703002	BOLT	6	58	844301002	SPLASH GUARD WASHER	3
29	843906002	WASHER D.13 UNI1751	6	59	730410182	CERAMIC PISTON DIA.45	3
30	730024612	MOUNTING RAIL	2	61	803195502	O-RING 2,62x20,24	3
31	730400092	CRANKCASE	1	62	863900002	BOLT M12X40 (FROM 05/14)	3
32	863969002	BOLT TCEI M12x25 UNI5931	8	63	730342512	PLUG (FROM 05/14)	3
33	802143002	OIL SEAL	2-1	68	311482322	PLAIN SAFETY CONE (OPTIONAL)	1
34/1	730411092	BEARING COVER D.80 CK 120 -CK 110	2	69	843701002	WASHER DIA.9X24X2 UNI 6593 (OPTIONAL)	2
34/2	730412092	BEARING COVER D.72 CK 90-CK 115-CK 73	2	70	862475002	BOLT M8X14 UNI 5931 (OPTIONAL)	2
35/1	730413652	SHIM SP.0,1	1	74	730499322	OIL SEAL SPACER (FROM 09/13)	3
35/2	730414652	SHIM SP.0,2	1	<b>REPAIR KIT</b>			<b>PCS.</b>
36	803210672	O-RING 2,62x88,57	2	KIT 55	739841973	SPARE PARTS KIT	18
37/1	812940002	BEARING 45X80X26 CK 120 -CK 110	2	KIT 58	739842973	SPARE PARTS KIT	3
37/2	812859002	BEARING 35X72X24 CK 90-CK 115-CK 73	2	KIT 121	739846973	SPARE PARTS KIT	27
38	730065722	COVER GASKET	1	KIT 186	739871973	SPARE PARTS KIT	18
39	730002092	CRANKCASE COVER	1	KIT 187	731028973	SPARE PARTS KIT	24